

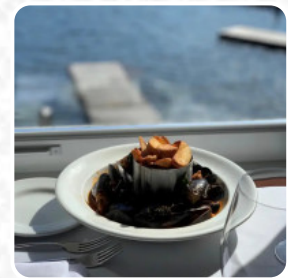


Water's Edge Menu

<https://menuweb.menu>

1072 Elgin House Rd, Port Carling, Canada

+17057652040 - <https://lakejoseph.clublink.ca/about/dining/waters-edge-wine-bar-and-grill/>



Here you will find the [menu](#) of **Water's Edge** in Port Carling. At the moment, there are **56** meals and drinks on the menu. Please note that we are closed for the season from Labour Day Monday onwards (September 5th).

From June 23rd to Labour Day, our patio is open Wednesday to Monday from 11am to 11pm on a first-come, first-served basis. Dining room reservations are available from 5pm to 10pm. There is ample parking available for over 50 boats as well as a spacious parking lot for stress-free parking. Please be aware that overnight boat parking is not permitted. Feel free to park at your own risk. If you encounter any issues with making reservations, please contact the restaurant and we will assist you promptly. Thank you and we look forward to welcoming you to The Water's Edge Wine Bar and Grill!.

Water's Edge Menu



Non Alcoholic Drinks

WATER

Smoothies

STRAWBERRY BANANA SPLIT

Pasta

SHRIMP DIAVOLO

Antipasti

LOBSTER AGNOLOTTI

Fish Dishes

FISH OF THE DAY

Drinks

DRINKS

Beer

MICHELOB ULTRA

Sweet

CREME BRULEE CHEESECAKE

Mexican Dishes

FISH TACOS

Pastas

PASTA PRIMAVERA ALIOGI

Main

WATERMELON CRUNCH

Happy Hour - Frozen Cocktails

FROZEN MARGARITA

Bar Bites

BRUSCHETTA FLATBREAD

Hand Helds

TENNESSEE CRISPY CHICKEN

Bottles & Cans

STELLA ARTOIS, BELGIUM

Draught Beer

MILL ST. BREWERY ORIGINAL ORGANIC LAGER

Classic Cocktails

CLASSIC MARTINI

Rotating Craft Beers

MUSKOKA BREWERY

Coffee Cocktails

SPANISH COFFEE

Beach Club Cocktails

BLUEBERRY MOSCOW MULE

To Drink

WHITE WINE SPRITZER

Water's Edge Menu



Premium Tea

LYCHEE PEACHY

Signature Rolls^

EARTH OCEAN

Pappy's Favorites

PHILLY STEAK SANDWICH

Specialty Coffee & Teas

B52 COFFEE

Uncategorized

BROWNIE BOWL

Salads

CAESAR SALAD

WATER'S EDGE GARDEN

Alcoholic Drinks

ESPRESSO MARTINI

APEROL SPRITZ

Alkoholische Cocktails

STRAWBERRY MOJITO

COSMOPOLITAN

These Types Of Dishes Are Being Served

FISH

CHICKEN

Burger

THE EDGE BURGER

CLASSIC CHEESEBURGER

IMPOSSIBLE SMASH BURGER

Dessert

BROWNIE

CHOCOLATE LAVA CAKE

APPLE CRISP

Entrées

EDGE CHICKEN WINGS

BAKED BRIE

SUMMER ANTIPASTO

ESCARGOT BLEU

Starters

CERTIFIED ANGUS BEEF TENDERLOIN 8 OZ

LAMB SIRLOIN

THE EDGE FARFALLE

CHICKEN TRAMONTO

GEORGIAN BAY PICKEREL

CERTIFIED ANGUS BEEF CENTERCUT RIBEYE 12 OZ

Cocktails

LIME YUZU SPRITZ

PINA COLADA

NEGRONI

THE PINK SUNSET

CLUBHOUSE CAESAR

DAIQUIRI

Water's Edge Menu



Water's Edge

1072 Elgin House Rd, Port
Carling, Canada

Opening Hours:

Wednesday 12:00-22:00

Thursday 12:00-22:00

Friday 12:00-22:00

Saturday 12:00-22:00

Sunday 12:00-22:00

Made with [Menu](#)

