



Silver Slate Steak House Menu

<https://menulist.menu>

273076 Twp 150, Stately, Alberta, T0L 1V0 | Silver Slate Arena, Nanton, Alberta, Canada, Parkland County

(+1)4036465933 - <http://www.silverslatearena.com/steak-house.php>



On this homepage, you can find the **complete menu** of **Silver Slate Steak House** from Parkland County. Currently, there are 39 menus and drinks up for grabs. For *seasonal or weekly deals*, please contact the owner of the restaurant directly. You can also contact them through their website. What [User](#) likes about Silver Slate Steak House:

Service was fast, great. Meal was superb and portions and quality excellent. Salad, pasta and steak tasted as they should. Location a great kept secret. Will do it again and recommend to have a reservation as some folks turned away. [read more](#). What [User](#) doesn't like about Silver Slate Steak House:

Things started out well. The drinks were good but the pasta and salad came before we'd had a sip of our drinks.

Pasta, salad and bread all very good. My wife had beef cutlets, which were very good. The biggest down side was my prime rib....It was overdone, tough and lacking in flavour. Quite disappointing as this is a beef inspired restaurant. Service and the rest of the food would have made this a 5 rating but poor p... [read more](#). The

restaurant and its premises are wheelchair accessible and thus usable with a wheelchair or physical disabilities, Depending on the weather, you can also sit outside and have something. Silver Slate Steak House from Parkland County is a suitable bar to have a beer after work, and sit with friends or alone, The versatile **Canadian meals** are well received by the customers of the restaurant.

Silver Slate Steak House Menu



Non alcoholic drinks

WATER

Alcoholic drinks

BEER

Pizza

WESTERN

Mains

FILLET

Salads

LETTUCE

Burgers

HAMBURGER

Snacks

BRUSCHETTA

Meat

STEAKHOUSE

Beef dishes

FILET MIGNON

Carne

RIB EYE STEAK

South american beef

RIB EYE

Fresh juices

CARROT

Mexican specialities

RIBS

Ribs

PRIME RIB

Fresh salads

SPINACH SALAD

Pizzen á 28 cm

STEAK HOUSE

Patrón

SILVER

Drinks

DRINKS

Asador's steaks

RIBEYE

Vegetable or hand roll

ASPARAGUS

Tozier 's favorites

LOBSTER TAIL

Dishes are also prepared with

Silver Slate Steak House Menu



these ingredients



SPINAT
SPINACH
MEAT

POTATOES

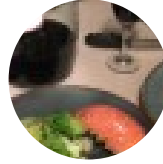
BUTTER

POTATOES

CHICKEN

BEEF

These types of dishes are being served



LOBSTER
APPETIZER
FILET

PASTA

BREAD

STEAK

LAMB

SALAD

Silver Slate Steak House Menu



Silver Slate Steak House

273076 Twp 150, Stately, Alberta,
T0L 1V0 | Silver Slate Arena,
Nanton, Alberta, Canada,
Parkland County

Opening Hours:
Thursday 17:00-21:00
Friday 17:00-21:00
Saturday 17:00-21:00
Sunday 17:00-21:00

Made with menulist.menu

