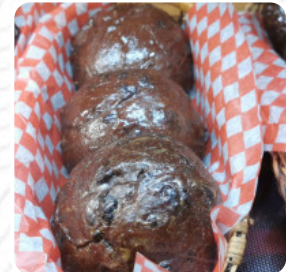




## ***La Boulangerie Sibuet Menu***

<https://menulist.menu>

306 Rte de l'Eglise, Saint Jean Port Joli, Quebec G0R 3G0, Canada, Saint-Jean-Port-Joli  
(+1)4185987890 - <http://www.boulangeriesibuet.com/>



On this homepage, you can find the **complete menu** of **La Boulangerie Sibuet** from [Saint-Jean-Port-Joli](#). Currently, there are 18 courses and drinks available. For **seasonal or weekly deals**, please contact the owner of the restaurant directly. You can also contact them through their website. What [User](#) likes about La Boulangerie Sibuet:

in Saint-Port-Joli the Sibuet bakery is not just a bakery. It is also a restaurant where it served excellent breakfasts. for lunch the soup with fish is a must. Of course, leaven breads and desserts, including maple sugar pie, to take or eat on site are the best in the city. very reasonable price. small fine grocery with local products also available. [read more](#). The restaurant is accessible and can therefore also be used with a wheelchair or physical limitations, Depending on the weather, you can also sit outside and have something. What [EPottawa](#) doesn't like about La Boulangerie Sibuet:

This little bakery had a nice array of ingredients to bring home which we did. The bakery however looked tastier than it actually was. It's a bit disheartening but the croissants, chocolatine and maple sugar cake we had was ok but not exciting. [read more](#). La Boulangerie Sibuet, popular for its original Canadian dishes, uses products that are typical of the country, here they serve a diverse brunch in the morning. In addition, they provide you fine menus à *la française*, In addition, guests of the local can enjoy delicious and varied Crêpes consume.

# ***La Boulangerie Sibuet Menu***



## ***Dessert***

CHEESE PLATE

## ***Little things***

CROISSANT

## ***Hot drinks***

TEA

## ***Sweets & Desserts***

CHOCOLATE CROISSANT

## ***Coffee***

COFFEE

## ***Breakfast Mood***

ALMOND CROISSANT

## ***Dishes are prepared with***

FRUIT

CHEESE

TOMATO

TOMATE

CHEESE

CHOCOLATE

## ***These types of dishes are being served***

PANINI

BREAD

DESSERTS

SOUP

FISH

SANDWICH

# ***La Boulangerie Sibuet Menu***



## ***La Boulangerie Sibuet***

306 Rte de l'Eglise, Saint Jean  
Port Joli, Quebec G0R 3G0,  
Canada, Saint-Jean-Port-Joli

**Opening Hours:**  
Sunday 07:00-17:00  
Monday 07:00-17:00  
Tuesday 07:00-17:00  
Wednesday 07:00-17:00  
Thursday 07:00-17:00  
Friday 07:00-17:00  
Saturday 07:00-17:00

Made with [menulist.menu](https://menulist.menu)

