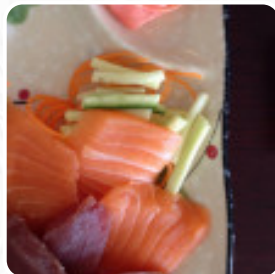




Miki Sushi Express Menu

<https://menulist.menu>

222 Baseline Road | #399, Sherwood Park, Alberta T8H 1S8, Canada
(+1)7804676752 - <http://www.mikisushisherwood.com/>



A **complete [menu](#)** of Miki Sushi Express from Sherwood Park covering all **30** meals and drinks can be found here on the food list. For seasonal or weekly deals, please get in touch via phone or use the contact details provided on the website. What [User](#) likes about Miki Sushi Express:

Must try the salad rolls! Very filling. Have tried assorted sashimi, spring rolls, cali rolls. Have yet to try something I haven't liked and everything is always very fresh. The owners are friendly and great help when explaining what each item is, if you aren't sure what to order. They have one on Victoria Trail [read more](#). The restaurant also offers the possibility to sit outside and eat in nice weather, And into the accessible spaces also come guests with wheelchairs or physical disabilities. WLAN is available without additional charges. What [User](#) doesn't like about Miki Sushi Express:

A little unexpected flavors as the sushi is unusual compared to what you might be used to. The soy sauce is sweet and the tempura comes with a chipotle style dip. The restaurant was clean and the menu was only sushi and sashimi. Don't expect a bento box or udon because there isn't any. [read more](#). The Miki Sushi Express originating from Sherwood Park provides various delicious seafood menus, and it's made with lots of fresh vegetables, fish and meat, easily digestible Japanese dishes prepared. Look forward to the enjoyment of *scrumptious vegetarian meals*, The creative fusion of different dishes with fresh and occasionally daring ingredients is highly valued by the visitors - a nice example of Asian Fusion.

Miki Sushi Express Menu



Appetizers

SPRING ROLLS

Pizza

SPICY

Soups

SEAFOOD SOUP

Main courses

SUSHI

Extras

SOY SAUCE

Starters & Salads

SHRIMP

Side Orders

MAYO

Appetizer

TEMPURA

Beilagen und Extras

SOJASAUCE

SALSAS

CHIPOTLE

Maki Sushi

FUTOMAKI

Sonstiges

SASHIMI

Japanese specialties

MISO SOUP

Spezial-Nudeln

UDON

Hot drinks

TEA

Sauces

SAUCE

Salads



HOUSE SALAD

SEAWEED SALAD

HOUSE SALAD

These types of dishes are being served

SOUP

FISH

SALAD

Dishes are prepared with



CUCUMBER

ONION

VEGETABLE

SEAFOOD

SHRIMP

Miki Sushi Express Menu



MISO

CHICKEN

AVOCADO

Miki Sushi Express Menu



Miki Sushi Express

222 Baseline Road | #399,
Sherwood Park, Alberta T8H 1S8,
Canada

Opening Hours:
Sunday 16:00-20:30
Monday 11:00-20:30
Tuesday 11:00-20:30
Wednesday 11:00-20:30
Thursday 11:00-20:30
Friday 11:00-21:00
Saturday 11:00-21:00

Made with menulist.menu

