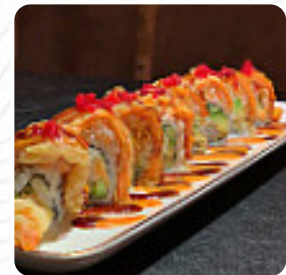




# Sushi Hon Menu

<https://menuweb.menu>

21 Beju Industrial Dr, Sylvan Lake, Alberta T4S 2J4, Canada  
 (+1)4038649911 - <http://facebook.com/sushihon>



On this webpage, you can find the **complete menu** of **Sushi Hon** from Sylvan Lake. Currently, there are **37** courses and drinks up for grabs.

# Sushi Hon Menu



## Nigiri

SALMON NIGIRI

## Pizza

SPECIAL PIZZA

## Extras

SPICY MAYO

## Sandwiches

CALIFORNIA SANDWICH

## Drinks

DRINKS

## Sauces

MAYO

## Appetizer

TEMPURA

## Maki Sushi

DYNAMITE ROLL

## Makiman Chef Specials

BEEF TATAKI

## Toppings

TOPPINGS

## Special Noodles

UDON

## Asian

GYOZA

## Rice Bowl Dishes

OYAKO DON

## Restaurant Category

GLUTEN FREE

## Sushi Rolls

DRAGON ROLL

SUSHI

## Seafood

CALAMARI

PRAWN

## Sushi

CALIFORNIA ROLL

SASHIMI

## Fish

SMOKED SALMON

SALMON ROLL

## Japanese Specialties

MISO SOUP

CHICKEN TERIYAKI

## These Types Of Dishes Are Being Served

SALAD

CHICKEN

# Sushi Hon Menu

SPICY TUNA

FISH

SOUP

## Ingredients Used

SHRIMP

SHRIMP



MISO

BEEF

TUNA

MELON

AVOCADO

CHEESE

## Sushi Hon

21 Beju Industrial Dr, Sylvan  
Lake, Alberta T4S 2J4, Canada

### Opening Hours:

Monday 11:30-14:30  
Tuesday 11:30-14:30  
Wednesday 11:30-14:30  
Thursday 11:30-14:30  
Friday 11:30-14:30  
Saturday 11:30-14:30

Made with [menuweb.menu](https://menuweb.menu)

