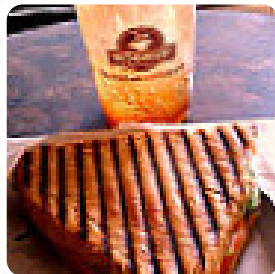




## ***Second Cup Menu***

<https://menulist.menu>

1600 15th Ave | Unit 130, Prince George, British Columbia V2L 3X3, Canada  
(+1)2505625620 - <https://secondcup.com/location/parkwood-place>



A comprehensive [menu](#) of **Second Cup** from [Prince George](#) covering all 19 menus and drinks can be found here on the food list. For changing offers, please get in touch via phone or use the contact details provided on the website. What [User](#) likes about Second Cup:

Stopped in 3x over the week. Every time the staff were smiling, friendly and quick with drinks and food. The cinnamon bun is really good. No raisins, yes! Perfect amount of icing and terrific warmed up which staff offers to do. The egg feta breakfast sandwich is a no go though. Two small spinach leaves across one fried egg and I guess there was cheese but no flavourful. Like, at all. Bathrooms are clean and must be a... [read more](#). The restaurant also offers the possibility to sit outside and have something in beautiful weather, And into the accessible rooms also come clientele with wheelchairs or physical disabilities. What [User](#) doesn't like about Second Cup:

Visited last in September 2016. Ordered oatmeal and basically was a cup full of milk with oats floating in it for \$5. Another time, the coconut frapuccino like drink was very creamy and good. Had a sandwich here before. Too much meat in it. Friendly service. [read more](#). Second Cup is renowned for its [traditional Canadian menus](#), which are prepared with products typical of the country, For breakfast a delicious brunch is offered here. Not to be left out is the comprehensive selection of **coffee and tea specialties** in this locale, The tasty sandwiches, small salads and other snacks are also suitable for a snack.

# ***Second Cup Menu***



## ***Sandwich, Bagels, Burger***

FRIED EGG

## ***Breakfast***

BREAKFAST SANDWICH

## ***Ice cream\****

VANILLA

## ***Hot Drink***

HOT CHOCOLATE

## ***Coffee***

COFFEE

## ***Drinks***

DRINKS

## ***Hash Browns and Sides***

OATMEAL

## ***These types of dishes are being served***

SANDWICH

PANINI

## ***Dishes are prepared with***



SPINACH

CHOCOLATE

MEAT

SPINAT

CHEESE

COCONUT

MILK

BEANS

FETA

EGG

# *Second Cup Menu*



## *Second Cup*

1600 15th Ave | Unit 130, Prince  
George, British Columbia V2L  
3X3, Canada

**Opening Hours:**  
Monday 6:00-21:00  
Tuesday 6:00-21:00  
Wednesday 6:00-21:00  
Thursday 6:00-21:00  
Friday 6:00-21:00  
Saturday 7:00-21:00  
Sunday 7:00-21:00

Made with [menulist.menu](https://menulist.menu)

