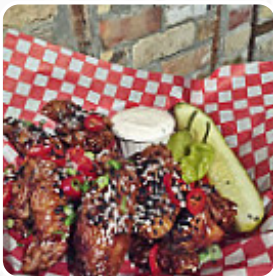




## ***Royal Electric Bar & Public Eatery Menu***

<https://menulist.menu>

52 Macdonell St, Guelph, Ontario N1H 2Z3, Canada  
(+1)5197671694 - <http://www.royalelectricguelph.com>



On this homepage, you can find the *complete [menu](#)* of *Royal Electric Bar & Public Eatery* from Guelph. Currently, there are **33** courses and drinks up for grabs. For changing offers, please contact the restaurant owner directly.

You can also contact them through their website. What [User](#) likes about Royal Electric Bar & Public Eatery: A friend's friend had highly recommended the burgers at Royal Electric and so upon discovering that our planned lunch location was closed - we crossed the street and tried something new. It was pretty quiet but our server (once we met up) was friendly, helpful and excellent. It is an interesting looking location - spacious and airy with the open front... To the burgers, my friend had the standard burger and quite enjoy... [read more](#). When the weather is nice you can also eat outside. What [User](#) doesn't like about Royal Electric Bar & Public Eatery: We visited the Royal Electric for an afternoon retirement party with appies and drinks and decided to try it the next night for dinner. The menu looked great but the execution was weak. The Saturday special of fried chicken had a hard batter coating that was too crunchy and too well done and lacked flavour. The ribs lacked that 'fall of the bone' tenderness that make great ribs. The mac and cheese is outstanding and... [read more](#). The large variety of coffee and tea specialties greatly enhances the value of a visit to Royal Electric Bar & Public Eatery, and you can indulge in scrumptious American dishes like **Burger or Barbecue**. At the bar, you can also relax after the meal (or during it) with an alcoholic or non-alcoholic drink, Naturally, you should also taste the delicious burgers, accompanied by sides like fries, salads, or wedges served.

# Royal Electric Bar & Public Eatery Menu



## Salads

SALAD

## Alcoholic Drinks

BEER

## Main courses

RIBS

## Salad

CAESAR SALAD

## Extras

SWEET POTATO

## Sauces

AIOLI

## Dessert

CHEESE PLATE

## Beilagen & Extras

POTATO CHIPS

## Hauptgerichte - Chicken

FRIED CHICKEN

## Coffee

COFFEE

## Drinks

DRINKS

## Restaurant Category

BAR

## Sandwiches

CHICKEN SANDWICH

FRIED CHICKEN SANDWICH

## Side dishes

PICKLES

SWEET POTATO FRIES

## Chicken

BUFFALO CHICKEN

BUFFALO CHICKEN SANDWICH

## Starters & Salads

WINGS

FRIES

POTATOE CHIPS

*These types of dishes are being served*

SOUP

SANDWICH

BURGER

PANINI

*Dishes are prepared with*



BUFFALO

POTATO

CHEESE

CHICKEN

# *Royal Electric Bar & Public Eatery Menu*



POTATOES

HONEY

GARLIC

PICKLE

# ***Royal Electric Bar & Public Eatery Menu***



## ***Royal Electric Bar & Public Eatery***

52 Macdonell St, Guelph, Ontario  
N1H 2Z3, Canada

### **Opening Hours:**

Monday 11:30 - 00:00  
Tuesday 11:30 - 00:00  
Wednesday 11:30 - 00:00  
Thursday 11:30 - 00:00  
Friday 11:30 - 02:00  
Saturday 10:00 - 02:00  
Sunday 10:00 - 00:00

Made with [menulist.menu](https://menulist.menu)

