

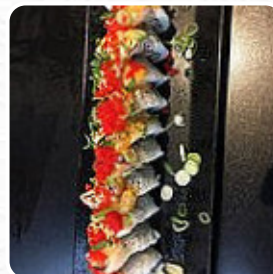


## ***Newfound Sushi Menu***

<https://menulist.menu>

117 Broadway, Corner Brook, Newfoundland and Labrador A2H 4E3, Canada

(+1)7096346666 - <http://www.facebook.com/pages/Newfound-Sushi/231968193550788>



Here you can find the menu of Newfound Sushi in [Corner Brook](#). At the moment, there are 24 meals and drinks on the food list. You can inquire about seasonal or weekly deals via phone. What [User](#) likes about Newfound Sushi:

The food is fantastic! Sometimes the wait is a little long, but the food is NEVER disappointing. My only wish is that they had a bigger spot, sometimes you feel a little cramped/crowded. Again, food is fantastic [read more](#). As a guest, you can use the WLAN of the establishment at no extra cost, Depending on the weather conditions, you can also sit outside and have something. What [User](#) doesn't like about Newfound Sushi:

So after all the hype, even a recommendation from friends who were here last summer, we made an attempt and were denied, even after calling and being told there was lots of room for walk-ins. So, we booked a table for the next day. There was no wait, as we were there for a late lunch. But the food was an utter let-down. Rice falling apart, small portions, very high prices, thin strips of too-warm sashimi, items missi... [read more](#). The Newfound Sushi originating from Corner Brook dishes out various fine [seafood](#) dishes, on the menu there are also a lot of **Asian meals**. The tasty Sushi such as Maki and Te-Maki however, is the undisputed highlight of this establishment, The **meat** is freshly cooked here on an open flame.

# ***Newfound Sushi Menu***



## ***Alcoholic Drinks***

BEER

## ***Pizza***

PIZZA SPECIAL

## ***Main courses***

SUSHI

## ***Starters & Salads***

SHRIMP

## ***Appetizer***

TEMPURA

## ***Main Course***

GYOZA

## ***Sonstiges***

SASHIMI

## ***Japanese specialties***

MISO SOUP

## ***Munchies***

SHRIMP TEMPURA

## ***Restaurant Category***

VEGETARIAN

BAR

## ***These types of dishes are being served***



FISH

LOBSTER

COD

DESSERTS

SOUP

ICE CREAM

## ***Dishes are prepared with***



TRAVEL

MISO

TOFU

SHRIMP

VEGETABLE

CHICKEN

SCALLOP

# ***Newfound Sushi Menu***



## ***Newfound Sushi***

117 Broadway, Corner Brook,  
Newfoundland and Labrador A2H  
4E3, Canada

**Opening Hours:**  
Tuesday 16:00-21:00  
Wednesday 16:00-21:00  
Thursday 16:00-21:00  
Friday 16:00-21:00  
Saturday 16:00-21:00

Made with [menulist.menu](https://menulist.menu)

