

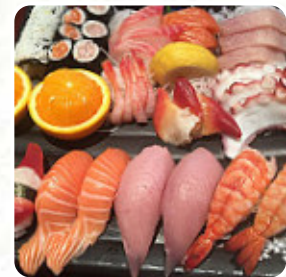


## ***Sushi Garden Menu***

<https://menulist.menu>

6611 Kingsway, Burnaby, British Columbia V5E 1E2, Canada

(+1)6043608611 - <https://sushigarden.ca/>



Here you can find the [menu](#) of [Sushi Garden](#) in Burnaby. At the moment, there are **53** dishes and drinks on the food list. You can inquire about changing offers via phone. What [User](#) likes about [Sushi Garden](#): If you like shush this is your place. They bring lots and lots of sushi to your table. The tables are more like little rooms where you will be seated. Very interesting place nice and private. And SO MUCH [SUSHI read more](#). The diner is accessible and can therefore also be used with a wheelchair or physiological disabilities, Depending on the weather conditions, you can also sit outside and be served. What [User](#) doesn't like about [Sushi Garden](#): extremely rude, not looking at the customer. We came to eat, except a person who came from work 30 minutes later. The guy behind the reception refuses to tell us again and again that everyone has to be there to get a table. We went to another restaurant next block and had no problem at all. Sushi Garden You are not the only Japanese restaurant in the area there are tons! inconspicuous and arrogant [read more](#). [Sushi Garden](#) The [groundbreaking Asian fusion cuisine](#) will thrill you, the exquisite mix of traditional dishes and exciting new creations will amaze!, By availing of the catering service from Sushi Garden in Burnaby, the dishes can be obtained on-site or at the party. You can also look forward to **scrumptious vegetarian cuisine**, on the menu there are also a lot of Asian meals.

# ***Sushi Garden Menu***



## ***Non alcoholic drinks***

LEMON

## ***Sandwiches***

CALIFORNIA SANDWICH

## ***Sushi Nigiri***

TAKO

## ***Sushi***

CALIFORNIA ROLL

## ***Appetizer***

TEMPURA

## ***Fingerfood***

CALAMARES

## ***Maki Sushi***

DYNAMITE ROLL

## ***Main Course***

YAKI UDON

## ***Fresh Juices***

CARROT

## ***Sonstiges***

SASHIMI

## ***Sashimi Angebot***

SALMON SASHIMI

## ***Spezial-Nudeln***

UDON

## ***Main courses - Teriyaki***

BEEF TERIYAKI

## ***Yaki-Grill Menü***

PRAWN

## ***From The Ocean***

PRAWN TEMPURA

## ***Sushi Or Sashimi***

OCTOPUS

## ***Sauces***

SAUCE

## ***Restaurant Category***

TROPICAL

## ***Salads***

LETTUCE

SEAFOOD SALAD

## ***Pizza***

PIZZA SPECIAL

SPICY

## ***Main courses***

CRAB

SUSHI

# *Sushi Garden Menu*



## *Extras*

GINGER

WASABI

## *Starters & Salads*

SHRIMP

WINGS

## *Hot drinks*

TEA

HOT TEA

## *Condiments and Sauces*

MUSHROOM

PRAWNS

## *Appetizers*



AGEDASHI TOFU

FRIED TOFU

DYNAMITE

## *These types of dishes are being served*

FISH

NOODLES

SALAD

## *Dishes are prepared with*



CARROTS

CHICKEN

BEEF

WE HAVE

SALMON

ONION

MUSHROOMS

TOFU

SEAFOOD

MEAT

RED SNAPPER

TERIYAKI

MUSHROOMS

SHRIMP

MANGO

# ***Sushi Garden Menu***



## ***Sushi Garden***

6611 Kingsway, Burnaby, British  
Columbia V5E 1E2, Canada

### **Opening Hours:**

Monday 11:30 -21:00  
Tuesday 11:30 -21:00  
Wednesday 11:30 -21:00  
Thursday 11:30 -21:00  
Friday 11:30 -21:30  
Saturday 11:30 -21:30  
Sunday 11:30 -21:00

Made with [menulist.menu](https://menulist.menu)

