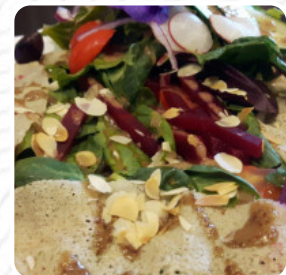
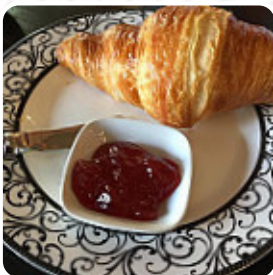




Cafe Tasse Menu

<https://menulist.menu>

251 Harbourfront Dr NE, Salmon Arm, British Columbia V1E 2W7, Canada
(+1)2508338625,(+1)2508335800 - <https://www.cafetasse.ca>



On this webpage, you can find the *complete menu* of Cafe Tasse from [Salmon Arm](#). Currently, there are 20 meals and drinks up for grabs. For **seasonal or weekly deals**, please contact the restaurant owner directly. You can also contact them through their website. What [User](#) likes about Cafe Tasse:

This small restaurant is only open for breakfast and lunches. It is located beside the entrance of the Prestige Hotel on the waterfront in Salmon Arm. The owners are from France, I understand and have unique items on their menu as well as standards. The savoury and sweet galettes and crepes are always delicious. There are special touches of culture such as fancy teapots and fine china sugar bowls. [read more](#). You can use the WLAN of the place at no extra cost, And into the accessible rooms also come guests with wheelchairs or physical limitations. If the weather are right, you can also be served outside. What [User](#) doesn't like about Cafe Tasse:

When my crepe arrived at my table I was tempted not to eat it but just marvel at its presentation. Brilliant! However, with the first bite my visual treat turned bland in my mouth. There was absolutely no seasoning. [read more](#). A visit to Cafe Tasse becomes even more rewarding due to the extensive variety of **coffee and tea specialties**, Furthermore, you can get sweet treats, cake, small snacks and chilled refreshments and hot drinks here. Moreover, they provide you fine dishes in the manner of French cuisine, Particularly, the visitors love the flavorful juices.

Cafe Tasse Menu



Süße Desserts

CREPES

Pizza

PIZZA SPECIAL

Dessert

CHOCOLATE CHIP COOKIES

Little things

CROISSANT

Soft drinks

JUICE

Cookies

CHOCOLATE CHIP

Sweets & Ice

COOKIES

Hot drinks

TEA

Biscuits and Cookies

COOKIE

Restaurant Category

FRENCH

Non alcoholic drinks

CHAI

APPLE JUICE

Coffee

CAPPUCCINO

COFFEE

Dishes are prepared with

EGG

APPLE

CHOCOLATE

These types of dishes are being served



PANINI

SALAD

DESSERTS

Cafe Tasse Menu



Cafe Tasse

251 Harbourfront Dr NE, Salmon
Arm, British Columbia V1E 2W7,
Canada

Opening Hours:
Tuesday 07:30-15:00
Wednesday 07:30-15:00
Thursday 07:30-15:00
Friday 07:30-15:00
Saturday 07:30-15:00
Sunday 08:00-14:00

Made with menulist.menu

