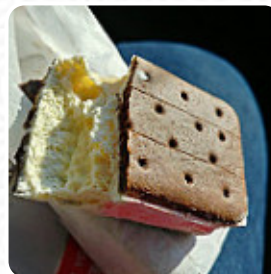
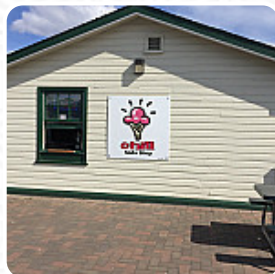
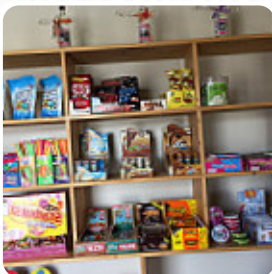




## **CHILL Soda Shop Menu**

<https://menulist.menu>

4805 Highway 16 West, Terrace, Kitimat-Stikine District, British Columbia, Canada  
(+1)2506355395,(+1)2506386004 - <http://www.facebook.com/CHILL-Soda-Shop-114779135207904>



On this webpage, you can find the complete menu of CHILL Soda Shop from [Terrace](#). Currently, there are **18** dishes and drinks available. For changing offers, please contact the restaurant owner directly. You can also contact them through their website. What [User](#) likes about CHILL Soda Shop: Great selection of icecream and all sorts of candies. Service is excellent and friendly. Be prepared for a bit of a wait on very hot days but the wait is worth it . [read more](#). The diner and its rooms are wheelchair accessible and thus reachable with a wheelchair or physical disabilities. What [User](#) doesn't like about CHILL Soda Shop: I guess for a small town, maybe my appearance is a little different than most. I dont usually see employees of a company go out of their way, though, to make me feel uncomfortable. Two young girls were working a couple evenings ago and they...made it very clear with their laughing, mocking, and snide comments about what they thought about me...just loud enough that I could hear and see their gestures. It was really a... [read more](#). The extensive diversity of coffee and tea specialties makes a visit to CHILL Soda Shop even more worthwhile. There are also scrumptious *South American* cuisine on the menu. In addition, there are fine American dishes, such as **burgers and grilled meat**, For a snack in between, the tasty **sandwiches**, small salads, and other snacks are suitable.

# *CHML Soda Shop Menu*



## *Alcoholic Drinks*

BEER

## *Appetizers*

YOGURT

## *Drinks*

SODAS

## *Soft drinks*

LEMONADE

## *Spirits*

AMERICANO

## *Water*

SODA

## *Hot drinks*

TEA

## *Tea*

GREEN TEA

## *Coffee*

COFFEE

## *Plates Brunch*

WAFFLE

## *Restaurant Category*

AMERICAN

## *Dishes are prepared with*

CHICKEN

BANANA

## *These types of dishes are being served*

ICE CREAM

SOUP

TURKEY

SANDWICH

PANINI

# CHML Soda Shop Menu



## CHML Soda Shop

4805 Highway 16 West, Terrace,  
Kitimat-Stikine District, British  
Columbia, Canada

### Opening Hours:

Sunday 12:00-21:00  
Monday 12:00-21:00  
Tuesday 12:00-21:00  
Wednesday 12:00-21:00  
Thursday 12:00-21:00  
Friday 12:00-21:00  
Saturday 12:00-21:00

Made with [menulist.menu](https://menulist.menu)

