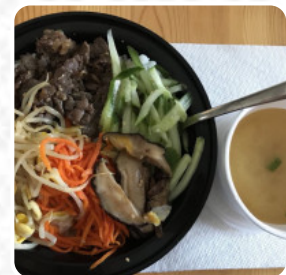




SushiME Menu

<https://menulist.menu>

8B Beechwood Ave | Rockcliffe Area, Ottawa, Ontario K1L 8B4, Canada
(+1)6137414777 - <https://www.sushimeottawa.weebly.com/>



Here you can find the [menu](#) of *SushiME* in Ottawa. At the moment, there are 26 dishes and drinks on the food list. You can inquire about **seasonal or weekly deals** via phone. What [User](#) likes about *SushiME*: Had two excellent meals here, well priced. Couldn't understand why it was often empty. Staff perhaps a bit too shy? Tempura and [sushi](#) were excellent -- and the house menus. Deserves to succeed: Asian solace in a sea of chips. [read more](#). When the weather conditions is nice you can also eat and drink outside, And into the accessible spaces also come guests with wheelchairs or physical disabilities. What [User](#) doesn't like about *SushiME*:

If you eat anything but [sushi](#), this place may not be your first choice. **EXPENCIVE** - I don't mind **SMALL SERVINGS** - well, for \$16 - before tax dish - I was hardly satisfied and I eat small to medium portions and am a slim in statute. As for the taste of that dish well, not worth \$16 either. **SERVICE** - slow during the half empty period. I would give it a 1 but sushi itself was good. [read more](#). At *SushiME* in Ottawa, **delicious pizza** is baked fresh using a time-honored method, and it's made with lots of freshly harvested vegetables, fish and meat, easily digestible Japanese meals cooked. meals are prepared typically in the Asian style, Furthermore, the visitors love the successful combination of different menus with new and partially experimental ingredients - a good example of successful [Asian Fusion](#).

SushiME Menu



Non alcoholic drinks

WATER

Appetizers

SHRIMP ROLL

Main courses

SUSHI

Extras

WASABI

Sandwiches

CALIFORNIA SANDWICH

Sushi

CALIFORNIA ROLL

Drinks

GLASS OF WINE

Appetizer

TEMPURA

Starters

TEMPURA ROLL

Main Course

GYOZA

Sonstiges

SASHIMI

Spezial-Nudeln

UDON

Condiments and Sauces

MUSHROOM

Restaurant Category

VEGETARIAN

Starters & Salads

POTATOE CHIPS

SHRIMP

Dishes are prepared with

EGG

SEAFOOD

SHRIMP

TOFU

TRAVEL

These types of dishes are being served

FISH

NOODLES

PIZZA

APPETIZER

SOUP

SushiME Menu



SushiME

8B Beechwood Ave | Rockcliffe
Area, Ottawa, Ontario K1L 8B4,
Canada

Opening Hours:
Monday 11:00 -21:00
Tuesday 11:00 -22:00
Wednesday 11:00 -22:00
Thursday 11:00 -22:00
Friday 11:00 -22:00
Saturday 11:00 -22:00
Sunday 16:00 -21:00

Made with menulist.menu

