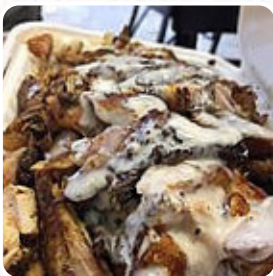




Sammouna Menu

<https://menulist.menu>

9255 Penetanguishene Rd | Unit 12B, Midland, Ontario L4R 4K4, Canada
(+1)7055265260,(+1)7052450399 - <http://sammouna.com>



On this homepage, you can find the complete menu of Sammouna from Midland. Currently, there are 15 menus and drinks up for grabs. For seasonal or weekly deals, please contact the owner of the restaurant directly. You can also contact them through their website. What [User](#) likes about Sammouna:

Easy to order, on time and driver was very courteous. The chicken Shawarma was very good; different than what I've had in past but I liked it a lot. Desert was Baklava and it's delicious. First time ordering and will order again and recommend. [read more](#). The diner is accessible and can therefore also be used with a wheelchair or physiological limitations, Depending on the weather, you can also sit outside and be served. WiFi is available for free. What [User](#) doesn't like about Sammouna:

I have attended this restaurant on numerous occasions, trying different things on the menu. I'm from Midland and want to give new businesses a chance. I'm not impressed at all. Shawarma was dry and lacking in taste, potatoes are over cooked, greasy and lack of flavour. Garlic sauce could be better, it's lacking in flavour and it would be nice to have an option of spicy garlic sauce. Falafel's are okay but I find they... [read more](#). Whether it's a delicious flatbread with a hearty garlic sauce or crispy falafel, the enjoyment of the dishes from the **Middle East** almost feels like being on a vacation - topped off with a crispy, sweet baklava, you'll head home satisfied,

For you, the menus are normally prepared *in the shortest time and fresh*. Typically, the **burgers of this restaurant** are served as highlights along with filling side dishes like french fries, leaf and cabbage salads or wedges, The visitors of the establishment are also thrilled with the comprehensive selection of various coffee and tea specialities that the restaurant offers.

Sammouna Menu

Appetizers

YOGURT

Oriental dishes

FALAFEL

Chicken

CHICKEN SHAWARMA

Turkish specialties*

BAKLAVA

Condiments and Sauces

CURRY

SOUVLAKI STATION (the photo is indicative)

CHICKEN SOUVLAKI

Restaurant Category

MEDITERRANEAN

Dishes are prepared with



POTATOES

CHICKEN

TRAVEL

These types of dishes are being served

SALAD

BURGER

WRAP

SOUVLAKI

LAMB

Sammouna Menu



Sammouna

9255 Penetanguishene Rd | Unit
12B, Midland, Ontario L4R 4K4,
Canada

Opening Hours:
Monday 11:00-19:30
Tuesday 11:00-19:30
Wednesday 11:00-19:30
Thursday 11:00-19:30
Friday 11:00-19:30
Saturday 11:00-19:30

Made with menulist.menu

