



A l'Express Gourmand Menu

<https://menulist.menu>

31 Rue Morin, Sainte-Adèle, Quebec J8B 2P6, Canada, Sainte-Adèle
+14502291915 - <https://lexpressgourmand.ca>



A complete [menu](#) of A l'Express Gourmand from Sainte-Adèle covering all 16 menus and drinks can be found here on the menu. For changing offers, please get in touch via phone or use the contact details provided on the website. What [User](#) likes about A l'Express Gourmand:

L' agneau de Kamouraska était un vrai délice ainsi que l'épaule de chevreau...la cuisson des légumes était parfaite et le mélange des épices raffiné...le tout arrosé d' un excellent Beaujolais recommandé par notre charmante hôtesse qui fait un travail efficace et chaleureuxBelle soirée. [read more](#). The place also offers the possibility to sit outside and eat in nice weather. The A l'Express Gourmand from [Sainte-Adèle](#) has **menus on offer that are typical for Europe**, At the bar, you can unwind with a *freshly tapped beer* or other alcoholic and non-alcoholic drinks. Furthermore, the atmosphere of the original American diner turns the meal into an extraordinary event, You can also look forward to the typical scrumptious French cuisine.

A l'Express Gourmand Menu



Non alcoholic drinks

LEMON

Pizza

PIZZA SPECIAL

Main courses

CRAB

Cakes

LEMON MERINGUE PIE

Coffee

CAPPUCCINO

Sauces

SAUCE

Seasonal Testing

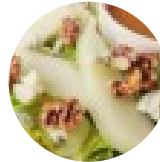
FOIE GRAS

Restaurant Category

FRENCH

GLUTEN FREE

These types of dishes are being served



SALAD

SOUP

LAMB

Ingredients Used

DUCK

MEAT

BEEF

SALMON

A l'Express Gourmand Menu



A l'Express Gourmand

31 Rue Morin, Sainte-Adele,
Quebec J8B 2P6, Canada,
Sainte-Adèle

Opening Hours:
Wednesday 17:00-20:00
Thursday 17:00-20:00
Friday 17:00-20:00
Saturday 17:00-20:00
Sunday 17:00-20:00

 gallery image

