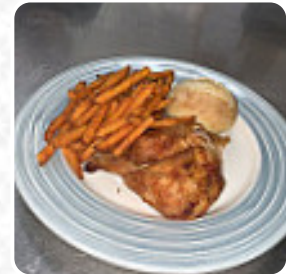
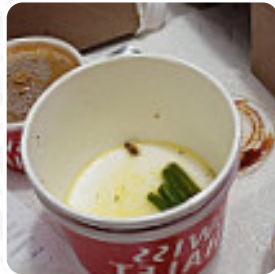


Swiss Chalet Menu

<https://menulist.menu>
60 Overlea Blvd, Toronto, Canada
+14166962268 - <https://www.swisschalet.com>



A [comprehensive menu](#) of Swiss Chalet from Toronto covering all 17 menus and drinks can be found here on the menu. For seasonal or weekly deals, please get in touch via phone or use the contact details provided on the website. What [User](#) likes about Swiss Chalet:

I had the most enjoyable Valentine's Day dinner with my friend at this Swiss chalet location and had the most fallen server edith. edith was very friendly and always checked us exactly when we needed them. the food came very fast and was delicious. I would like to thank edith for her excellent service and hope to see her again my next time! I love this place! [read more](#). What [User](#) doesn't like about Swiss Chalet:

This place is absolutely infested w roaches.I walked in to place an order for takeout... and there was a roach between the 2 doors to get into take out. I made a u-turn and left. After reading the other reviews of others seeing and finding roaches in their food it's safe to say this place should be shut down. Shame on you swiss chalet for allowing this location to continue to operate under such disgusting conditions.... [read more](#). If you're in a rush, you can get delicious Fast-Food dishes to your taste from Swiss Chalet in Toronto, freshly prepared for you in few minutes, Furthermore, the **sugar-sweet treats** of this restaurant sparkle not only in the eyes of our young guests. You can just get one of the tasty **sandwiches**, a healthy salad or another snack, if you're not that ravenous, There are also tasty *South American* menus on the menu.

Swiss Chalet Menu



Appetizers

SPRING ROLLS

Extras

DIPPING SAUCE

Sandwiches

CHICKEN SANDWICH

Fish dishes

FISH AND CHIPS

Side dishes

MASHED POTATOES

Starters & Salads

POTATOE CHIPS

Saucen, Chutneys & Extras

GRAVY

Cereals

STARTING

Restaurant Category

DESSERT

Ingredients Used

CHICKEN

MEAT

POTATOES

These types of dishes are being served



FISH

BREAD

PANINI

SALAD

Swiss Chalet Menu



Swiss Chalet

60 Overlea Blvd, Toronto,
Canada

Opening Hours:

Monday 11:00 -22:00
Tuesday 11:00 -22:00
Wednesday 11:00 -22:00
Thursday 11:00 -22:00
Friday 11:00 -22:00
Saturday 11:00 -22:00
Sunday 11:00 -21:30

Made with menulist.menu

 gallery image

