

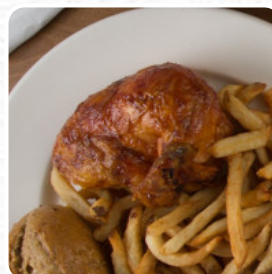
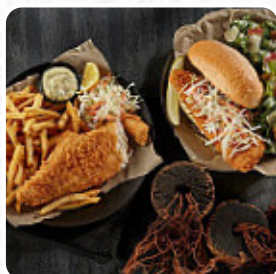


Swiss Chalet Menu

<https://menulist.menu>

6303 Currents Dr NW, Edmonton, AB T6W 0L9, Canada

+17804146178 - <https://www.swisschalet.com/>



On this webpage, you can find the complete menu of Swiss Chalet from Edmonton. Currently, there are **18** meals and drinks up for grabs. For changing offers, please contact the owner of the restaurant directly. You can also contact them through their website. What [Korey Moore](#) likes about Swiss Chalet:

Who can visit Canada (as an ex pat) and NOT visit Swiss Schalet. The menus has expanded drastically but bring me the half chicken dinner any time. Great chicken, great fries and the gravy/dipping sauce can't be omitted.

[read more](#). In beautiful weather you can even have something in the outdoor area, And into the accessible spaces also come clientele with wheelchairs or physiological disabilities. What [Aiden Gutmann](#) doesn't like about Swiss Chalet:

We took our daughter and four grandchildren here because it is close to our home and our grandkids are very picky eaters - chicken is one of the few things they will eat at a restaurant. The food was the usual good quality that we expect from Swiss Chalet, and the children thoroughly enjoyed their meals. Unfortunately, the service was slow which doesn't work well with four hungry kids between the ages of five and ele... [read more](#). Swiss Chalet is famous for its traditional Canadian meals, made from typical country ingredients, You'll find tasty **South American** dishes also in the menu. There's also tasty pizza, baked fresh using traditional methods, Besides the tasty *sandwiches*, small salads and other snacks also make a good snack.

Swiss Chalet Menu



Salads

LETTUCE

Main courses

RIBS

Extras

DIPPING SAUCE

Sandwiches

CHICKEN SANDWICH

Wraps

CLASSIC CHICKEN

Salad

COLE SLAW

Starters & Salads

FRIES

Sauces

GRAVY

Starters

CHICKEN POT PIE

Family Packs

FAMILY PACK

Sauces

SAUCE

Meat & Ribs

HALF CHICKEN

Ingredients Used

CHICKEN

SEAFOOD

These types of dishes are being served

PANINI

PIZZA

WRAP

CHICKEN WRAP

Swiss Chalet Menu



Swiss Chalet

6303 Currents Dr NW, Edmonton,
AB T6W 0L9, Canada

Opening Hours:

Monday 11:00 -20:00
Tuesday 11:00 -20:00
Wednesday 11:00 -20:00
Thursday 11:00 -20:00
Friday 11:00 -20:00
Saturday 11:00 -20:00
Sunday 11:00 -20:00

Made with menulist.menu

