



all contain no raw fish, raw lobster prawns  
or shell fish.

**6m (vegan) 3.5**  
chocolate brownie, chocolate & a hint of warm spices

**at muffin (gf) 3.5**  
just like you want it to be.

**croissant 5.25**  
light buttery slight sweetness.

**ory danishes 5.0**  
in house creations.

**1 (gf, vegan) 2.75**  
5 hand made naturally sweetened & unsaturated fats.

**vegan + gluten free.**

**ut + gluten free.**

**ake (gf) 3.0**  
1 cup for 100g of weight, about 100g = 100g

**te cookie (gf) 3.0**  
with chocolate chips & a hint of nutmeg.

**ewwie (gf) 5.25**  
chocolate chips, almond butter, espresso, honey  
& vanilla.

**quares (gf, keto, df) 3.75**  
caramel sauce, maple syrup and low sugar.

**only - 5.0**  
100g = 100g

**| breakfast |**

**breakfast sandwich 6.25**  
toasted chicken breast, roasted onion, tomato, pepper, cheese, egg, leaf, and whole wheat on bun.

**egg bite (gf) 4.5**  
hand made egg wrapped in bread bun. & easy to eat.

**yogurt parfait (gf) 5.0**  
toasted granola, yogurt, fresh fruit, honey, maple syrup.

**ham + egg danish 5.25**  
hand made danish & hand made egg.

**bagel + cream cheese 4.25**  
cream as requested bagel with plain cream cheese on the top  
vegan option: bagel + vegan cream cheese 4.00

**| lunch |**

**chicken + roasted red pepper sandwich**  
roasted chicken breast, roasted onion, tomato, pepper, cheese, egg, leaf, and whole wheat on bun.

**gf option: whole wheat on a bun of 100g = 100g**

**eggplant sandwich (vegan) 11.5**  
eggplant + roasted onion, eggplant, tomato, honey, garlic  
sauce on bun.

**gf, vegan option: eggplant + tomato bun with leaf**

**hit bagel sandwich 8.75**  
toasted bagel, leaf, tomato, roasted onion, tomato, pepper, cheese, egg, leaf, and whole wheat on bun.

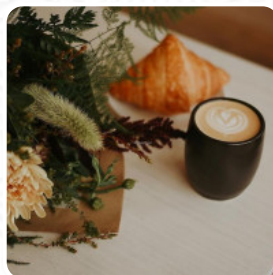
**vegan option: leaf + tomato + tomato bun with leaf**

**glazy bowl (gf, vegan) 12.0**  
toasted bagel, leaf, tomato, roasted onion, tomato, pepper, cheese, egg, leaf, and whole wheat on bun.

# Jonny Bean Coffee Menu

<https://menuweb.menu>

418 13 St N, Lethbridge, Alberta, Canada, T1H 2S2  
+14039425504 - <https://www.jonnybean.com>



**| breakfast |**

**breakfast sandwich 6.25**  
toasted chicken breast, roasted onion, tomato, pepper, cheese, egg, leaf, and whole wheat on bun.

**egg bite (gf) 4.5**  
hand made egg wrapped in bread bun. & easy to eat.

**yogurt parfait (gf) 5.0**  
toasted granola, yogurt, fresh fruit, honey, maple syrup.

**ham + egg danish 5.25**  
hand made danish & hand made egg.

**bagel + cream cheese 4.25**  
cream as requested bagel with plain cream cheese on the top  
vegan option: bagel + vegan cream cheese 4.00

**| lunch |**

**chicken + roasted red pepper sandwich**  
roasted chicken breast, roasted onion, tomato, pepper, cheese, egg, leaf, and whole wheat on bun.

**gf option: whole wheat on a bun of 100g = 100g**

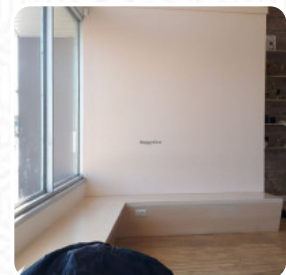
**eggplant sandwich (vegan) 11.5**  
eggplant + roasted onion, eggplant, tomato, honey, garlic  
sauce on bun.

**gf, vegan option: eggplant + tomato bun with leaf**

**hit bagel sandwich 8.75**  
toasted bagel, leaf, tomato, roasted onion, tomato, pepper, cheese, egg, leaf, and whole wheat on bun.

**vegan option: leaf + tomato + tomato bun with leaf**

**glazy bowl (gf, vegan) 12.0**  
toasted bagel, leaf, tomato, roasted onion, tomato, pepper, cheese, egg, leaf, and whole wheat on bun.



A comprehensive [menu](#) of Jonny Bean Coffee from Lethbridge covering all 17 meals and drinks can be found here on the menu.

# Jonny Bean Coffee Menu



## Drinks

DRINKS

## Hot Drinks

COFFEE

## French

CROISSANT

## Coffee

CAPPUCCINO

CARAMEL LATTE

## Restaurant Category

VEGAN

GLUTEN FREE

## These Types Of Dishes Are Being Served

PANINI

SANDWICH

## Dessert



MUFFINS

COOKIES

BROWNIES

## Ingredients Used

RASPBERRY

BEANS

CARAMEL

VEGETABLES

MILK

# Jonny Bean Coffee

418 13 St N, Lethbridge, Alberta,  
Canada, T1H 2S2

### Opening Hours:

Tuesday 08:30-16:30

Wednesday 08:30-16:30

Thursday 08:30-16:30

Friday 08:30-16:30

Saturday 09:00-16:00

Made with [menuweb.menu](https://menuweb.menu)

