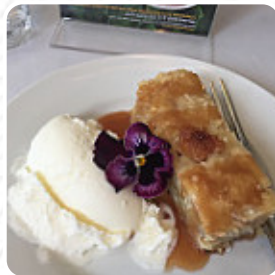




## The Pantry Cafe & Catering Menu

<https://menuweb.menu>

70 Clinch Crescent, St. John's, Newfoundland and Labrador A1B 4G8, Canada  
+17097222803,+17097228200 - <https://acollins2281.wixsite.com/the-pantry>



A comprehensive [menu](https://menuweb.menu) of The Pantry Cafe & Catering from St. John's covering all 38 meals and drinks can be found here on the food list.

# The Pantry Cafe & Catering Menu



## Starters & Salads

POTATO CHIPS

## Chicken

PINEAPPLE CHICKEN

## Sauces

SALSA

## Dessert

BROWNIE

## Mexican Dishes

CHILLI SAUCE

## Hot Drinks

COFFEE

## Lunch Specials - Chicken Dishes

PINEAPPLE CHICKEN

## Restaurant Category

DESSERT

VEGAN

## Sandwiches



CHICKEN SANDWICH

GRILLED CHEESE

BREAKFAST SANDWICH

## These Types Of Dishes Are Being Served



SANDWICH

PANINI

SALAD

DESSERTS

FISH

SOUP

PIZZA

CHICKEN

BREAD

## Ingredients Used



JALAPENO

ONION

CHILI

BACON

CHOCOLATE

CHEESE

PESTO

TOMATOES

CHOCOLATE CHIP

WATERMELON

PINEAPPLE

JALAPENOS

HONEY

EGG

FRUIT

VEGETABLES

MELON

# The Pantry Cafe & Catering Menu

---



## The Pantry Cafe & Catering

70 Clinch Crescent, St. John's,  
Newfoundland and Labrador A1B  
4G8, Canada

### Opening Hours:

Monday 09:00-15:00  
Tuesday 09:00-15:00  
Wednesday 09:00-15:00  
Thursday 09:00-15:00  
Friday 09:00-15:00

Made with [menuweb.menu](https://menuweb.menu)

